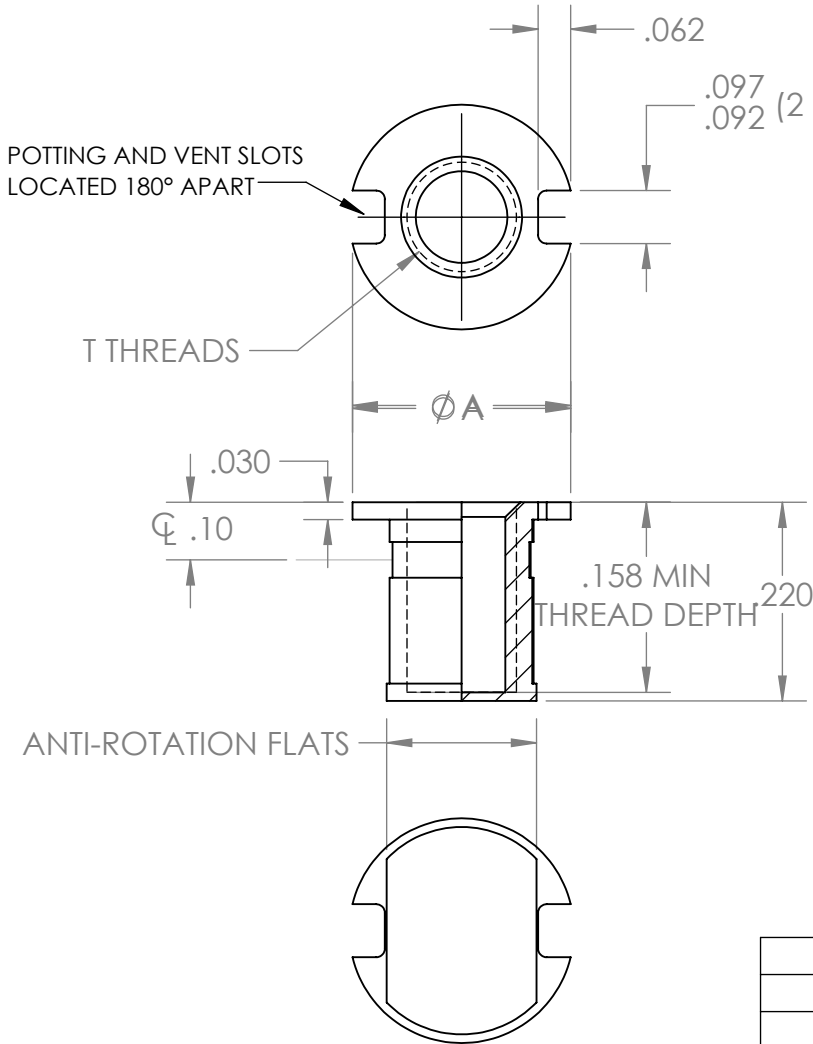


# W719

INSERT, POTTED-IN, BLIND THREADED, THREAD LOCKING, LIGHTWEIGHT

## CROSS REFERENCE

WITTEN	STANDARDS/OTHER	SHUR-LOK	THE YOUNG ENGINEERS	ALCOA/TRIDAIR
W719	CDIN13 (C&D ZODIAC)	SL2748 SL2899	TYE2048	

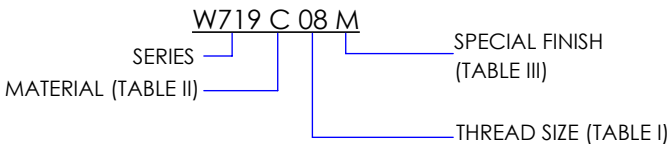


FIRST DASH NO	T THREAD CLASS	A°	INSTALLATION HOLE
-06	.1380-32 UNJC 3B	.310	.311-.317
-08	.1640-32 UNJC 3B	.341	.342-.348
-3	.1900-32 UNJF 3B	.390	.392-.398

MAT'L CODE	MATERIAL	FINISH
-	CARBON STEEL PER ASTM A108 ULT TENSILE STRENGTH 85 KSI	CAD PLATE PER QQ-P-416, TYPE II, CLASS 2
A	AL ALLOY 2024-T4 OR T351 PER AMS-QQ-A-225/6	ANODIZE PER AMS-A-8625 TYPE I, CLASS 1
C	CRES 303 PER ASTM-A582	PASSIVATE PER ASTM-A967

FINISH CODE	SPECIAL FINISH
M	DRI-FILM LUBE PER AS5272, TYPE I IN THREAD AREA ONLY.
S	SILVER PATE PER AMS 2410
P	CADMIUM PLATE ON CRES INSERT PER QQ-P-416 TY II, CLASS 2.

### EXAMPLE PART NUMBERING SYSTEM



1. AN ADHESIVE BACKED INSTALLATION TAB IS INCLUDED WITH EACH INSERT.
2. THREAD LOCK PER NASM25027.
3. THREADS PER AS8879, CLASS 3B
4. PLATING OR DRY FILM LUBRICANT IS RECOMMENED ON SELF-LOCKING CRES INSERTS.