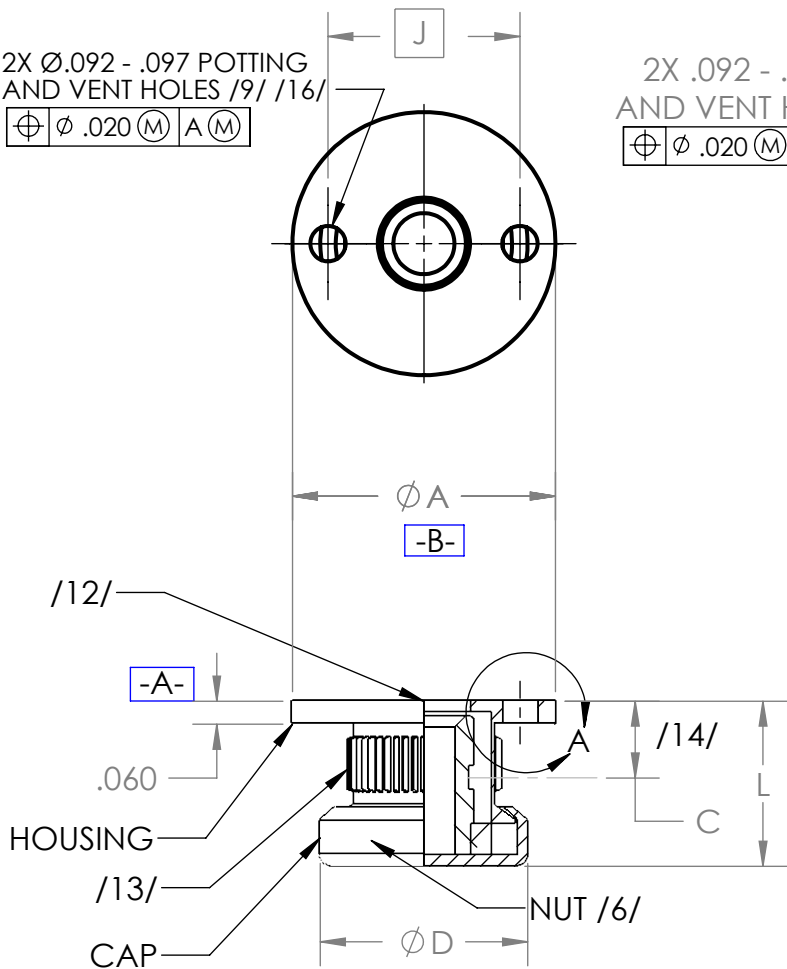


# W1835

INSERT, MOLDED IN, BLIND THREADED, LOCKING, NONSELF-LOCKING, FLOATING, SANDWICH PANEL

## CROSS REFERENCE

WITTEN	STANDARDS/OTHER	SHUR-LOK	THE YOUNG ENGINEERS	ALCOA/TRIDAIR
W1835	NAS1835 SERIES	SL606	TYE1835	D1835 SERIES



2X FULL R OPTIONAL

OPTIONAL SLOTS

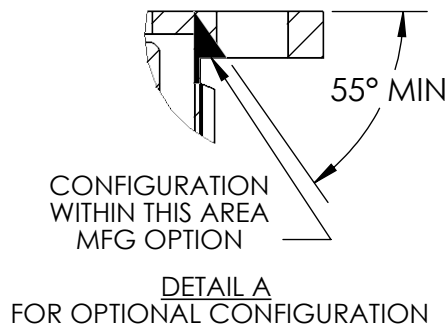


TABLE I - DIMENSIONS

SIZE DASH NO.	THREAD CLASS 3B /1/	$\varnothing A$ +.000 - .010	C	$\varnothing D$ MAX	J BASIC	K MIN	L /7/	INSTALLATION HOLE SIZE
08	.1640-32 UNJC	.685	.16	.545	.500	.393	.37	.686 - .691
3	.1900-32 UNJF	.685	.16	.545	.500	.393	.43	.686 - .691
4	.2500-28 UNJF	.748	.18	.735	.591	.484	.56	.749 - .755
5	.3125-24 UNJF	.810	.20	.800	.655	.548	.75	.811 - .817
6	.3750-24 UNJF	.873	.22	.865	.718	.611	.81	.874 - .880

# W1835

## CROSS REFERENCE

 INSERT, MOLDED IN, BLIND THREADED, LOCKING,  
 NONSELF-LOCKING, FLOATING, SANDWICH PANEL

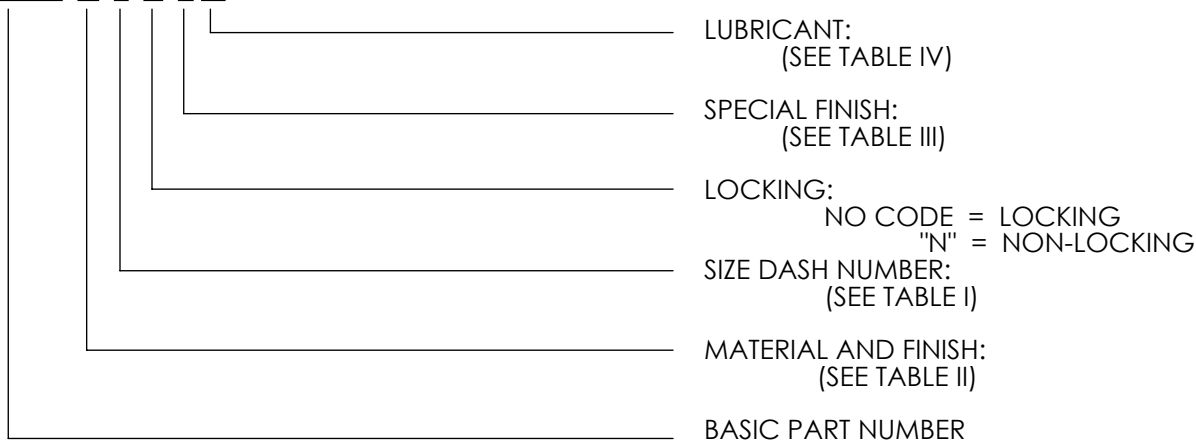
WITTEN	STANDARDS/OTHER	SHUR-LOK	THE YOUNG ENGINEERS	ALCOA/TRIDAIR
W1835	NAS1835 SERIES	SL606	TYE1835	D1835 SERIES

MATL CODE	TABLE II -- ITEM, MATERIAL, AND STANDARD FINISH		
	NUT	HOUSING	CAP
-	CARBON OR ALLOY STEEL ULTIMATE STRENGTH 85 KSI MIN. CADMIUM PLATE PER AMS-QQ-P-416, TYPE II, CLASS 2	CARBON OR ALLOY STEEL ULTIMATE STRENGTH 85 KSI MIN. CADMIUM PLATE PER AMS-QQ-P-416, TYPE II, CLASS 2	AL ALLOY 6061-O, FINISH CHEM FILM PER MIL-DTL-5541. CLASS 1A OR CLASS 3.
A	CARBON OR ALLOY STEEL ULTIMATE STRENGTH 85 KSI MIN. CADMIUM PLATE PER AMS-QQ-P-416, TYPE II, CLASS 2	AL ALLOY 2024-T4. ANODIZE PER MIL-DTL-8625 TYPE I, CLASS OPTIONAL	AL ALLOY 6061-O, FINISH CHEM FILM PER MIL-DTL-5541. CLASS 1A OR CLASS 3.
C	CRES 303 PASSIVATE PER ASTM-A967	CRES 303 PASSIVATE PER ASTM-A967	
D	CRES 303 PASSIVATE PER ASTM-A967	AL ALLOY 2024-T4. CHEM-FILM PER MIL-DTL-5541. CLASS 1A OR CLASS 3	
G	CARBON OR ALLOY STEEL ULTIMATE STRENGTH 85 KSI MIN. CADMIUM PLATE PER AMS-QQ-P-416, TYPE II, CLASS 2	CRES 303 PASSIVATE PER ASTM-A967	

TABLE III SPECIAL FINISH	
FINISH CODE	OPTIONAL SPECIAL FINISH
P	CAD PLATE PER AMS-QQ-P-416 TYPE II, CLASS 2 ON CRES NUT ONLY.
S	SILVER PLATE PER AMS2410, CRES NUT ONLY

TABLE IV LUBRICANT	
CODE	OPTIONAL SPECIAL FINISH
NO CODE	NO LUBRICANT
M	SOLID FILM LUBRICANT PER AS5272, TYPE I APPLIED TO NUT ONLY

### CODE:

**W1835 C 4 N P M**


### EXAMPLE OF PART NUMBER:

- W1835-3M = .1900-32 UNJF-3B THREAD, CARBON STEEL NUT AND HOUSING, CADMIUM PLATED WITH SOLID FILM LUBRICANT ON NUT, LOCKING.
- W1835A3N = .1900-32 UNJF-3B THREAD CARBON STEEL NUT, CADMIUM PLATED, NON-LOCKING, AL ALLOY ANODIZED HOUSING.
- W1835C4S = .2500-28 UNJF-3B THREAD, CRES NUT AND HOUSING, PASSIVATED PER AMS2700, METHOD 1, TYPE 2, CLASS 4, SILVER PLATED NUT, LOCKING.
- W1835C4P = .2500-28 UNJF-3B THREAD, CRES NUT AND HOUSING, PASSIVATED PER AMS2700, METHOD 1, TYPE 2, CLASS 4, CADMIUM PLATED NUT, LOCKING.

# W1835

## CROSS REFERENCE

INSERT, MOLDED IN, BLIND THREADED, LOCKING,  
NONSELF-LOCKING, FLOATING, SANDWICH PANEL

WITTEN	STANDARDS/OTHER	SHUR-LOK	THE YOUNG ENGINEERS	ALCOA/TRIDAIR
W1835	NAS1835 SERIES	SL606	TYE1835	D1835 SERIES

### NOTES:

- /1/ THREADS PER AS8879.
- (2) LOCKING TORQUE PER NASM25027 EXCEPT LOCKING, CORROSION RESISTANT STEEL INSERT WITHOUT PLATING OR LUBRICANT WILL BE TESTED USING A SILVER PLATED BOLT OR SCREW.
- (3) TOLERANCES UNLESS OTHERWISE SPECIFIED: .XXX =  $\pm 0.10$  .XX =  $\pm 0.02$
- (4) AN ADHESIVE-BACKED INSTALLATION TAB NAS1837 (PLASTIC) SHALL BE FURNISHED WITH EACH INSERT.
- /5/ PLATING OR SOLID FILM LUBRICANT IS RECOMMENDED ON LOCKING CRES INSERTS.
- /6/ MINIMUM RADIAL FLOAT .032.
- /7/ MAXIMUM BOLT ENGAGEMENT SHOULD NOT EXCEED "L" MINUS .060.
- (8) NOT USED.
- /9/ BURRS AROUND POTTING HOLES OR SLOTS PERMISSABLE UNDER FLANGE.
- (10) DIMENSIONING AND TOLERANCING PER ANSI Y14.5M -1982.
- (11) DIMENSIONS IN INCHES.
- /12/ MINIMUM "GO" THREAD GAGE PENETRATION SHALL BE ONE HALF REVOLUTION BEFORE LUBRICATION. MINIMUM BOLT THREAD PENETRATION SHALL BE THREE QUARTER REVOLUTION AFTER LUBRICATION.
- /13/ STRAIGHT OR DIAMOND ANTIROTATIONAL KNURL (MANUFACTURER'S OPTION).
- /14/ CENTERLINE OF THREAD LOCK WHEN APPLICABLE.
- /15/ SHANK DEFORMED IN THIS AREA TO PROVIDE THREAD LOCK WHEN APPLICABLE.
- /16/ POTTING AND VENT HOLES OR SLOTS (MANUFACTURER'S OPTION).
- (17) DIMENSIONAL LIMITS APPLY AFTER PLATING, AND PRIOR TO SOLID FILM LUBE.
- (18) UNLESS OTHERWISE SPECIFIED, PART INVENTORY MANUFACTURED TO PREVIOUS REVISIONS OF THE APPLICABLE DRAWING OR SPECIFICATION MAY BE PROCURED AND USED UNTIL STOCK IS DEPLETED.
- (19) THIS STANDARD TAKES PRECEDENCE OVER DOCUMENTS REFERENCED HEREIN.
- (20) UNLESS OTHERWISE SPECIFIED HEREIN, REFERENCED DOCUMENTS SHALL BE THE ISSUE IN EFFECT ON DATE OF MANUFACTURE. HOWEVER, EXISTING MATERIAL INVENTORY CERTIFIED TO A PREVIOUS REVISION OF THE APPLICABLE MATERIAL SPECIFICATION(S) IS ACCEPTABLE FOR USE UNTIL DEPLETION.