

WITTEN FASTENERS

140 SERIES THREADED INSERT, BLIND, REGULAR HEAD STYLE MEDIUM DUTY

TABLE I

CODE NO.	T THREAD	A DIA ±.010	B SELF-LK ±.06	C DIA ±.010	INSTR HOLE +.010/-0.000
632	6-32 UNC	.490	.12	.460	.500
832	8-32 UNC	.490	.12	.460	.500
1032	10-32 UNF	.520	.12	.490	.530
420	1/4-20 UNC	.583	.16	.553	.593
428	1/4-28 UNF	.583	.16	.553	.593
518	5/16-18 UNC	.646	.20	.616	.656
524	5/16-24 UNF	.646	.20	.616	.656
616	3/8-16 UNC	.708	.20	.678	.718
624	3/8-24 UNF	.708	.20	.678	.718

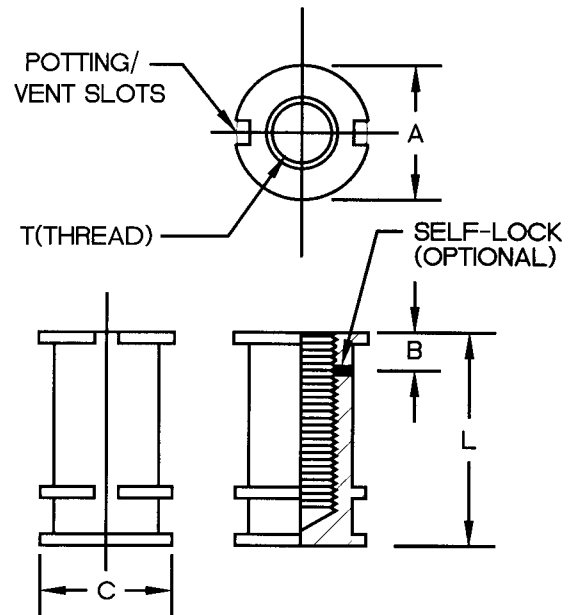
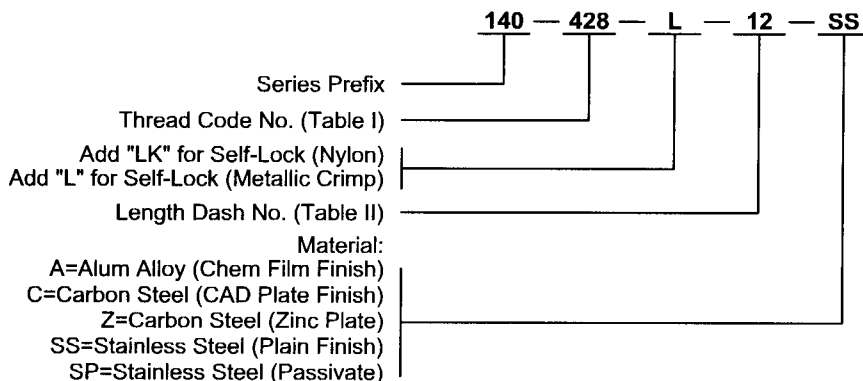


TABLE II

DASH NO.	L ±.03 LENGTH	MINIMUM FULL THREAD DEPTH					
		#6	#8	#10	1/4	5/16	3/8
-5	.312	.162	.162	--	--	--	--
-6	.375	.225	.225	.175	--	--	--
-7	.437	.276	.287	.237	--	--	--
-8	.500	.276	.328	.300	.225	--	--
-10	.625	.276	.328	.375	.350	.350	.350
-12	.750	.276	.328	.375	.475	.475	.475
-14	.875	.276	.328	.375	.500	.600	.600
-16	1.000	.276	.328	.375	.500	.625	.725
-18	1.125	.276	.328	.375	.500	.625	.750

EXAMPLE: PART NUMBERING SYSTEM



Notes:

1. Threads per MIL-S-7742
2. Installation tabs are available