

155 SERIES FLOATING INSERTS

SHEET 1 OF 2

TABLE I

CODE NO.	T THREAD	A DIA +.000 -.010	INSL HOLE DIA
832	8-32 UNC	.685	.686 - .691
1032	10-32 UNF	.685	.686 - .691
420	1/4-20 UNC	.748	.749 - .755
428	1/4-28 UNF	.748	.749 - .755
518	5/16-18 UNC	.810	.811 - .817
524	5/16-24 UNF	.810	.811 - .817
616	3/8-16 UNC	.873	.874 - .880
624	3/8-24 UNF	.873	.874 - .880
714	7/16-14 UNC	.936	.937 - .943
720	7/16-20 UNF	.936	.937 - .943
813	1/2-13 UNC	1.061	1.062 - 1.068
820	1/2-20 UNF	1.061	1.062 - 1.068

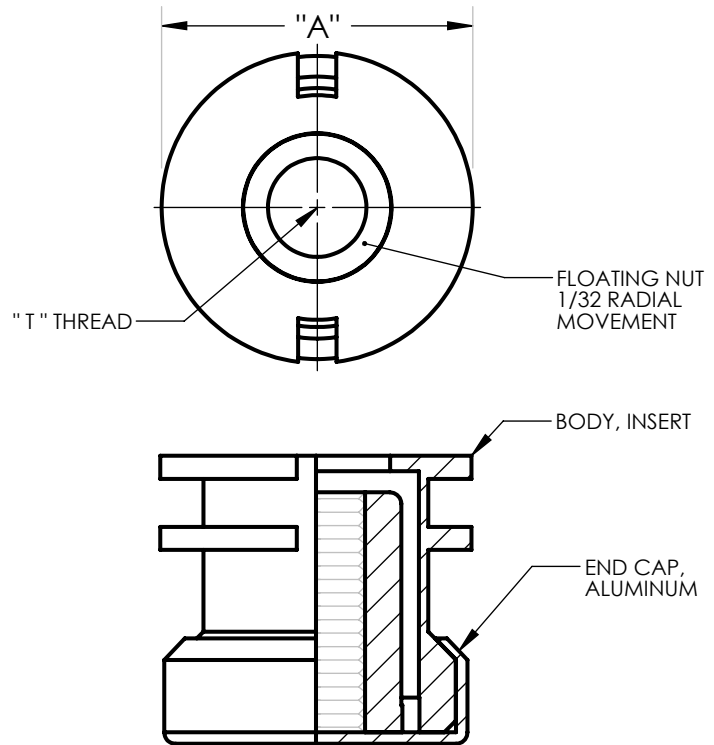


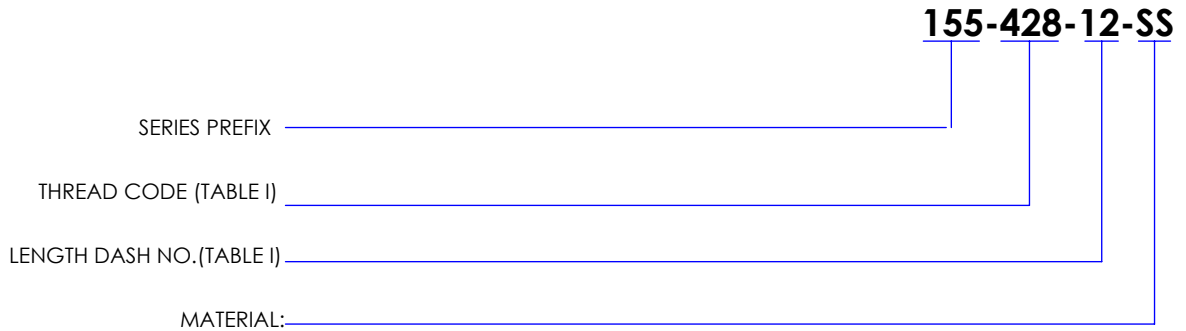
TABLE II

DASH NO.	L±.03 LENGTH	MINIMUM FULL THREAD DEPTH						
		#8	#10	1/4	5/16	3/8	7/16	1/2
-7	.437	.287	.237	-	-	-	-	-
-8	.500	.328	.300	.225	-	-	-	-
-10	.625	.328	.375	.350	.350	.350	-	-
-12	.750	.328	.375	.475	.475	.475	.400	.400
-14	.875	.328	.375	.500	.600	.600	.525	.525
-16	1.000	.328	.375	.500	.625	.725	.650	.650
-18	1.125	.328	.375	.500	.625	.750	.775	.775
-20	1.250	.328	.375	.500	.625	.750	.874	.900
-22	1.375	.328	.375	.500	.625	.750	.874	1.000
-24	1.500	.328	.375	.500	.625	.750	.874	1.000

155 SERIES FLOATING INSERTS

SHEET 2 OF 2

EXAMPLE: PART NUMBERING SYSTEM



A= ALUMINUM(CHEM FILM FINISH)HOUSING & CAP WITH CARBON STEEL NUT (CADMIUM PLATED).

C=CARBON STEEL(CAD PLATE FINISH)HOUSING & NUT WITH ALUMINUM(CHEM FILM FINISH) CAP.

Z=CARBOM STEEL(ZINC PLATE FINISH) HOUSING & NUT WITH ALUMINUM (CHEM FILM FINISH) CAP.

SS=STAINLESS STEEL (NO FINISH) HOUSING & NUT WITH ALUMINUM (CHEM FILM FINISH) CAP.

SP=STAINLESS STEEL(PASIVATE) HOUSING & NUT WITH ALUMINUM (CHEM FILM FINISH) CAP.

NOTES:

- 1.THREADS PER SAE-AS8879
- 2.PATENT NO. 4,941,765 AND 5,082,405
3. NO. OF RIBS VARY WITH LENGTH.
4. INSTALLATION TABS ARE AVAILABLE.