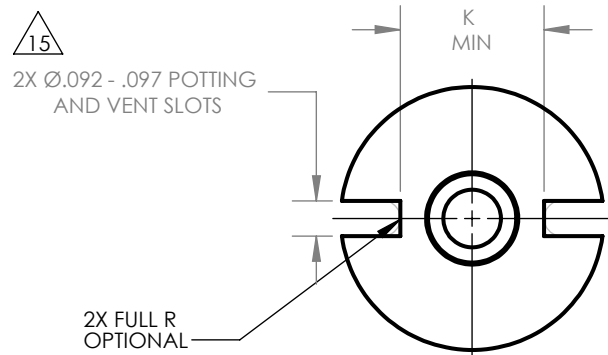
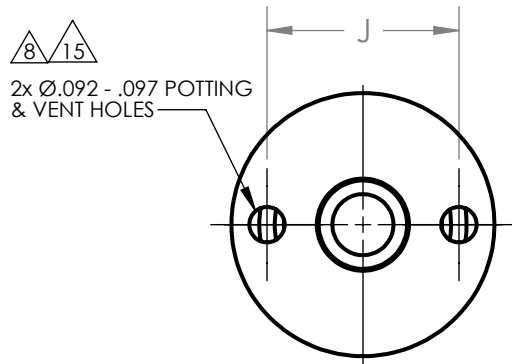


NAS 1835

INSERT, MOLDED IN, BLIND, THREADED, SELF-LOCKING
NONSELF-LOCKING, FLOATING, SANDWICH PANEL



OPTIONAL SLOTS

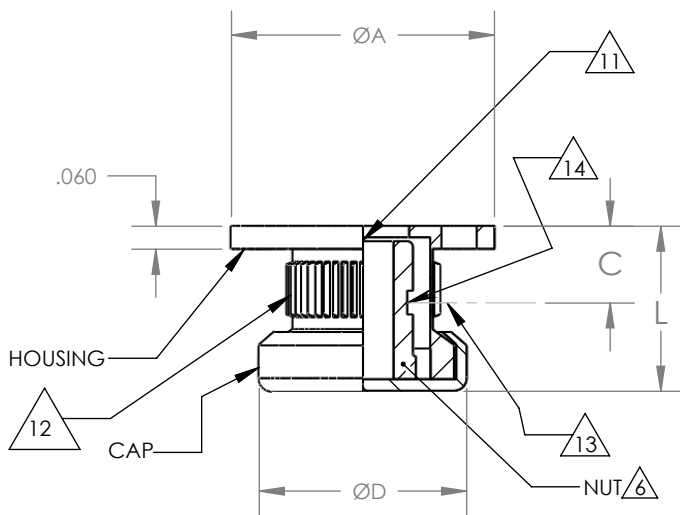



TABLE I

FIRST DASH NO	THREAD CLASS 3B	$\varnothing A$ +.000 -.010	C	$\varnothing D$ MAX	J BASIC	K MIN	L 	INSTALLATION HOLE SIZE
-08	.1640-32 UNJC	.685	.16	.545	.500	.393	.37	.686 - .691
-3	.1900-32 UNJF	.685	.16	.545	.500	.393	.43	.686 - .691
-4	.2500-28 UNJF	.748	.18	.735	.591	.484	.56	.749 - .755
-5	.3125-24 UNJF	.810	.20	.800	.655	.548	.75	.811 - .817
-6	.3750-24 UNJF	.873	.22	.865	.718	.611	.81	.874 - .880

NAS 1835**INSERT, MOULDED IN, BLIND, THREADED, SELF-LOCKING
NONSELF-LOCKING, FLOATING, SANDWICH PANEL****MATERIAL:**

NUT: CARBON STEEL PER ASTM-A-108, ASTM-A-576, OR MATERIAL COMPOSITION PER FED-STD-66.
ULTIMATE TENSILE STRENGTH 85 KSI MINIMUM.
CORROSION RESISTANT STEEL TYPE 303 (UNS S30300) PER ASTM-A-582.

HOUSING: CARBON STEEL PER ASTM-A-108, ASTM-A-576, OR MATERIAL COMPOSITION PER FED-STD-66.
ULTIMATE TENSILE STRENGTH 85 KSI MINIMUM.
ALUMINUM ALLOY, GRADE 2024 (UNS A92024) TEMPER T4 OR T351 PER QQ-A-225/6.
CORROSION RESISTANT STEEL, TYPE 303 (UNS S30300) PER ASTM-A-582.

CAP: ALUMINUM ALLOY, GRADE 3003-0, 3003-H14 (UNS A93003) PER QQ-A-250/2, 5052-0, 5052-H32 (UNS A95052) PER QQ-A-250/8, OR 6061-0 (UNS A96061) PER QQ-A-250/11.

FINISH: CARBON STEEL - CADMIUM PLATE PER SAE-AMS-QQ-P-416, TYPE II, CLASS 2.
AL ALLOY - HOUSING - ANODIZE PER MIL-A-8625, TYPE I, CLASS OPTIONAL.
AL ALLOY - CAP - ANODIZE PER MIL-A-8625, TYPE I, CLASS OPTIONAL OR
COAT PER MIL-C-5541, CLASS 3 OR CLASS 1A.
CRES - PASSIVATE PER ASTM-A-967. SILVER PLATE PER AMS 2410 OR AMS 2411 OR
CADMIUM PLATE PER SAE-AMS-QQ-P-416, TYPE II, CLASS 2.

SOLID FILM LUBRICANT PER AS5272, TYPE 1, APPLIED TO NUT ONLY.

CODING: NO LETTER AFTER BASIC NUMBER INDICATES CARBON STEEL NUT AND HOUSING, CADMIUM PLATED.
SUFFIX A TO BASIC NUMBER INDICATES CARBON STEEL NUT, CADMIUM PLATED AND ALUMINUM ALLOY HOUSING, ANODIZED.
SUFFIX C TO BASIC NUMBER INDICATES CRES NUT AND HOUSING, PASSIVATED.
FIRST DASH NUMBER INDICATES NOMINAL THREAD SIZE, SEE TABLE I.
NO LETTER AFTER DASH NUMBER FOR CRES INDICATES PASSIVATE ONLY. SEE NOTE 5.
SUFFIX M TO DASH NUMBER INDICATES SOLID FILM LUBRICANT ON NUT. SEE NOTE 5.
SUFFIX N TO DASH NUMBER INDICATES NONSELF-LOCKING.
SUFFIX P TO DASH NUMBER INDICATES CADMIUM PLATE ON CRES NUT. SEE NOTE 5.
SUFFIX S TO DASH NUMBER INDICATES SILVER PLATED CRES NUT. SEE NOTE 5.

EXAMPLE OF PART NUMBER:

NAS 1835-3M	.1900-32 UNJF-3B THREAD, CARBON STEEL NUT AND HOUSING, CADMIUM PLATED WITH SOLID FILM LUBRICANT ON NUT. SELF-LOCKING.
NAS 1835A3N	.1900-32 UNJF-3B THREAD CARBON STEEL NUT, CADMIUM PLATED, NONSELF-LOCKING, AL ALLOY HOUSING.
NAS 1835C4S	.2500-28 UNJF-3B THREAD, CRES NUT AND HOUSING, PASSIVATED. SILVER PLATED NUT, SELF-LOCKING.
NAS 1835C4P	.2500-28 UNJF-3B THREAD, CRES NUT AND HOUSING, PASSIVATED. CADMIUM PLATED NUT, SELF-LOCKING

NAS 1835**INSERT, MOULDED IN, BLIND, THREADED, SELF-LOCKING
NONSELF-LOCKING, FLOATING, SANDWICH PANEL**

NOTES:

1. THREADS PER MIL-S-8879.
2. LOCKING TORQUE PER MIL-DTL-25027 EXCEPT SELF-LOCKING CORROSION RESISTANT STEEL INSERT WITHOUT PLATING OR LUBRICANT WILL BE TESTED USING A SILVER PLATED BOLT OR SCREW.
3. TOLERANCES UNLESS OTHERWISE SPECIFIED:
 .XXX = $\pm .010$
 .XX = $\pm .02$
4. AN ADHESIVE BACKED INSTALLATION TAB NAS 1837 (PLASTIC PER WITTEN 2007) SHALL BE FURNISHED WITH EACH INSERT.
5. PLATING OR SOLID FILM LUBRICANT IS RECOMMENDED ON SELF-LOCKING CRES INSERTS.
- △6. MINIMUM RADIAL FLOAT .032.
- △ MAXIMUM BOLT ENGAGEMENT SHOULD NOT EXCEED "L" MINUS .060.
- △8. BURRS CAUSED BY POTTING HOLES OR SLOTS PERMISSABLE UNDER FLANGE.
9. DIMENSIONING AND TOLERANCING PER ANSI Y14.5M - 1982.
10. DIMENSIONS IN INCHES UNLESS OTHERWISE NOTED.
- △11. MINIMUM "GO" THREAD GAGE PENETRATION SHALL BE ONE HALF REVOLUTION BEFORE LUBRICATION. MINIMUM BOLT THREAD PENETRATION SHALL BE THREE QUARTER REVOLUTION AFTER LUBRICATION.
- △12. STRAIGHT OR DIAMOND ANTIROTATIONAL KNURL. (MANUFACTURER'S OPTION)
- △13. CENTERLINE OF THREAD LOCK WHEN APPLICABLE.
- △14. SHANK DEFORMED IN THIS AREA TO PROVIDE THREAD LOCK WHEN APPLICABLE. POTTING & VENT HOLES MANUFACTURERS' OPTION.
15. POTTING & VENT HOLES OR SLOTS (MANUFACTURER'S OPTION).
16. DIMENSIONAL LIMITS APPLY AFTER PLATING, PRIOR TO SOLID FILM LUBE.