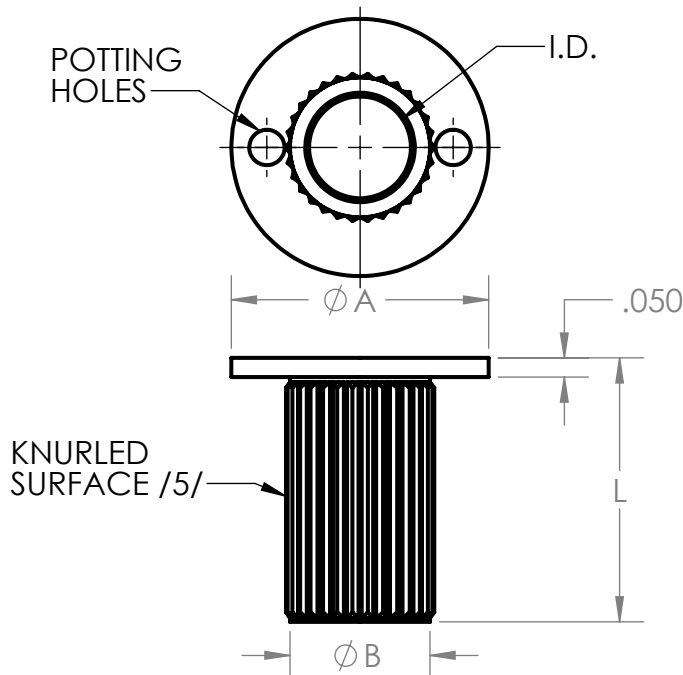


352 SERIES

THRU-HOLE SLEEVE, PROTRUDING



EXAMPLE PART NUMBERING SYSTEM

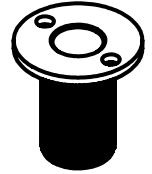
352- 105 - 12- SS

MATERIAL AND FINISH
 A= ALUM ALLOY (CHEM FILM)
 C= CARBON STEEL (CADMIUM)
 Z= CARBON STEEL (ZINC PLATE)
 SS= STAINLESS STEEL
 SP= STAINLESS (PASSIVATE)

LENGTH DASH NO (TABLE 2
 INCREMENTS OF 1/16") ALT
 LENGTHS SEE NOTE 4

D CLEARANCE HOLE (TABLE 1)
 ALT CLEARANCE HOLE SEE NOTE 6

SERIES PREFIX


TABLE 1 DIMENSIONS

SIZE DASH NO.	Ø I.D. +.005 -.005 /6/	Ø A +.020 -.020	Ø B +.010 -.010
-101	.153	.550	.253
-103	.179	.550	.379
-105	.202	.600	.302
-107	.217	.600	.317
-109	.265	.670	.365
-111	.280	.670	.380
-113	.327	.730	.427
-115	.342	.730	.442
-117	.390	.800	.490
-119	.405	.800	.505
-121	.452	.850	.552
-123	.467	.850	.567
-125	.515	.920	.615
-127	.530	.920	.630
-129	.640	1.050	.740
-131	.655	1.050	.755
-133	.765	1.170	.865
-135	.780	1.170	.880

TABLE 2
SEE NOTE 4

DASH NO.	L ±.010 LENGTH
-4	.250
-5	.312
-6	.375
-7	.437
-8	.500
-9	.563
-10	.625
-11	.687
-12	.750
-13	.812
-14	.875
-15	.937
-16	1.000

GENERAL NOTES:

- INSTALLATION TABS ARE INCLUDED.
- TOLERANCES .XXX = ±.010
.XX = ±.02
- /3/ BURRS AROUND POTTING HOLES OR SLOTS PERMISSIBLE UNDER FLANGE
- LENGTH DASH NO IN 1/16 INCREMENTS FOR OTHER LENGTHS USE .XXX
 CALLOUT AS SHOWN:
 352-105-400-SS
 └─── LENGTH
- /5/ STRAIGHT OR DIAMOND ANTIROTATIONAL KNURL, SHORTER LENGTHS KNURL OPTIONAL (MANUFACTURER'S OPTION).
- /6/ FOR ALTERNATE CLEARANCE HOLE USE .XXX CALLOUT AS SHOWN:
 352-439-16-SS
 └─── HOLE
 (TOLERANCES MAY VARY ON ALTERNATE HOLE SIZES)