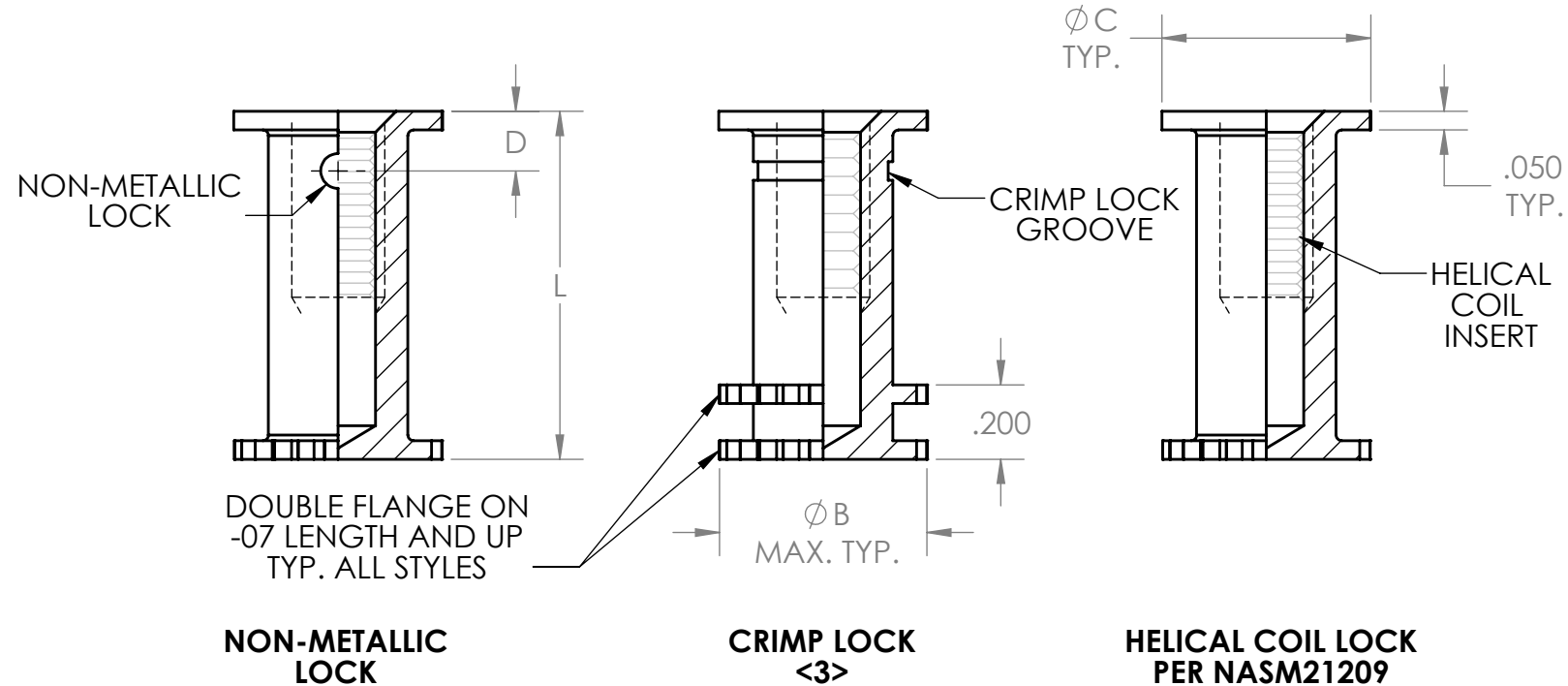


2253H 2253HE

INSERT, POTTED-IN BLIND THREADED

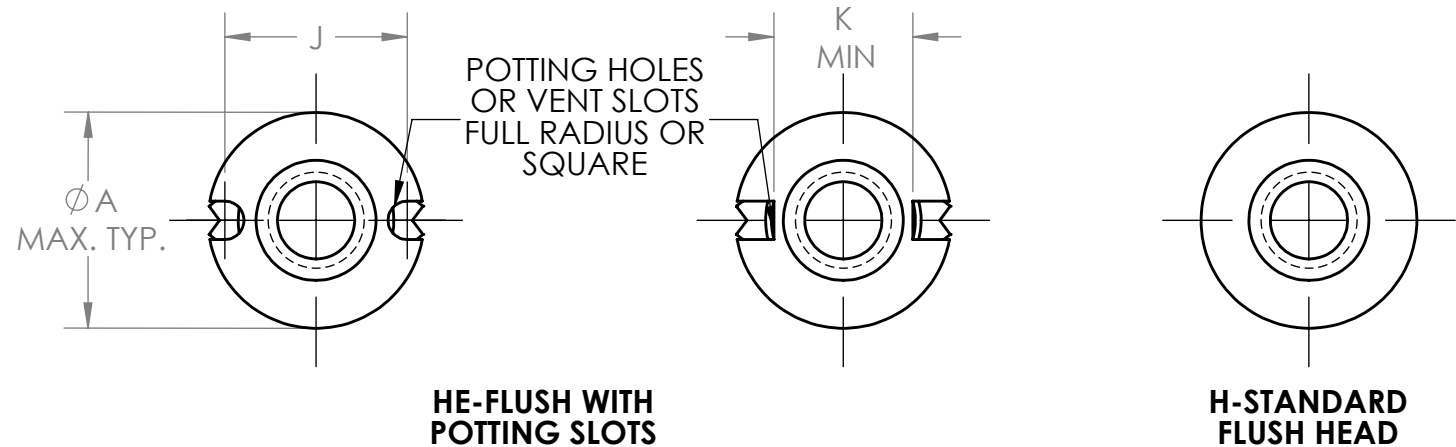
CROSS REFERENCE

WITTEN	STANDARDS/OTHER	SHUR-LOK	THE YOUNG ENGINEERS	ALCOA/TRIDAIR
2253H 2253HE			TYE1400 TYE1400H	400H 400HE

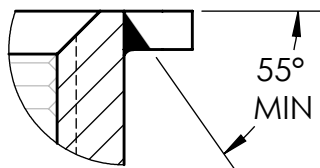


HEAD STYLES:

SLOT STYLE AT MFG OPTION

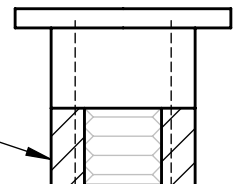


DETAIL SLOT OPTION



OPTION FOR SHORT PARTS:

SHORT LENGTH INSERTS MAY INCORPORATE SAME MATERIAL AND FINISH SHIM OR DISK TO PROVIDE FULL THREADS



2253H

2253HE

INSERT, POTTED-IN BLIND THREADED

CROSS REFERENCE

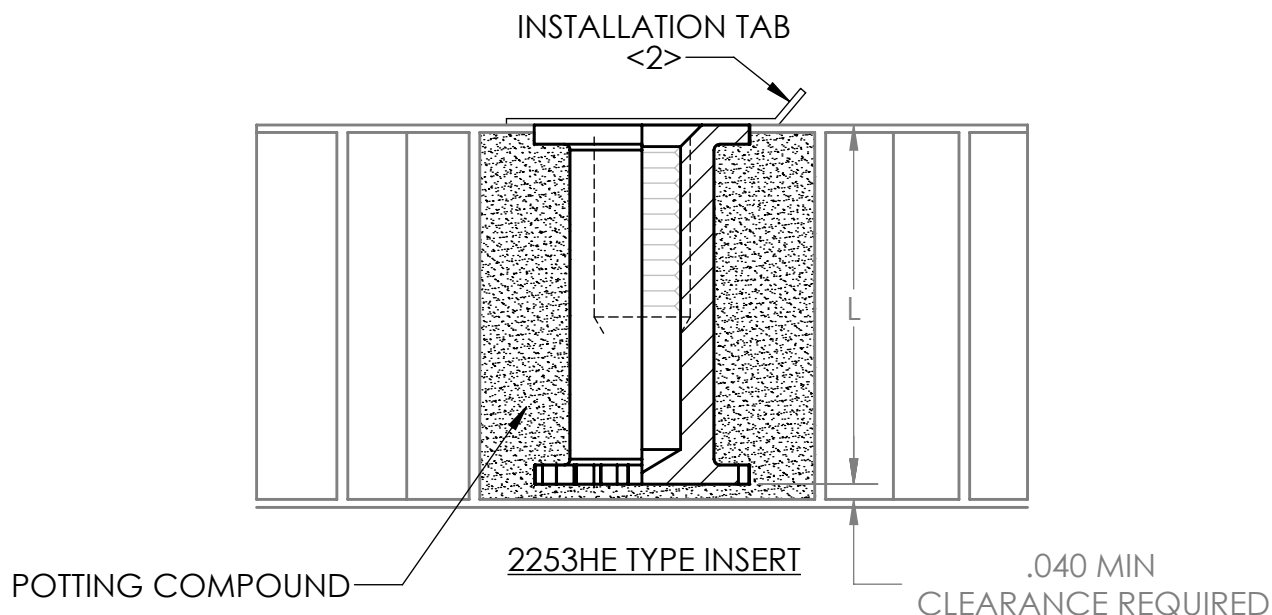
WITTEN	STANDARDS/OTHER	SHUR-LOK	THE YOUNG ENGINEERS	ALCOA/TRIDAIR
2253H 2253HE			TYE1400 TYE1400H	400H 400HE

TABLE 1

SIZE	THREAD	A DIA MAX	B DIA MAX	C DIA REF	D	J	K MIN	INSTALLATION TAB NO.	INSTALLATION DRILL DIA. +.005 -.000
440	.1120-40 UNJC - 3B	.374	.322	.195	.100	.280	.173	2007-280	.375
632	.1380-32 UNJC - 3B	.436	.385	.230	.120	.343	.236	2007-343	.437
832	.1640-32 UNJC - 3B	.499	.447	.290	.120	.405	.298	2007-405	.500
1032	.1900-32 UNJF - 3B	.499	.447	.290	.120	.405	.298	2007-405	.500
428	.2500-28 UNJF - 3B	.561	.510	.353	.140	.467	.360	2007-467	.562
524	.3125-24 UNJF - 3B	.686	.635	.460	.150	.591	.484	2007-591	.687
624	.3750-24 UNJF - 3B	.811	.697	.550	.160	.718	.611	2007-718	.812

GENERAL NOTES:

- BURRS PERMISSIBLE AT KNURLED AREAS AND ON UNDERSIDE OF HEAD AROUND POTTING SLOTS.
- ADHESIVE BACKED INSTALLATION TABS PER TABLE 1 ARE FURNISHED WITH INSERTS.
- CRIMP LOCK AVAILABLE IN 303 CRES AND CARBON STEEL ONLY.
- PLATING OR SOLID FILM LUBE IS RECOMMENDED ON SELF-LOCKING CRES INSERTS.
- CLOSE OUT DISC MAY BE REQUIRED IN SOME LENGTHS TO PROVIDE MINIMUM FULL THREAD.
- LOCATE LOCKING PELLET NO CLOSER THAN 10° FROM EDGE OF EITHER POTTING SLOT.
- CONSULT WITTEN ENGINEERING DEPARTMENT FOR AVAILABILITY OR OPTIONAL MATERIALS, FINISHES OR SIZES.
- SURFACE FINISH TO BE 125 MICROINCHES.



2253H

2253HE

INSERT, POTTED-IN BLIND THREADED

CROSS REFERENCE

WITTEN	STANDARDS/OTHER	SHUR-LOK	THE YOUNG ENGINEERS	ALCOA/TRIDAIR
2253H 2253HE			TYE1400 TYE1400H	400H 400HE

TABLE 2		"X" INDICATES NOT AVAILABLE							
LENGTH DASH NO.	L	MIN FULL THREAD LENGTH (EXCEPT HELICAL COIL)							
		440	632	832	1032	428	524	624	
<5>	-04	.220	.170	.170	.170	X	X	X	
	-05	.285	.190	.190	.190	.235	X	X	
	-06	.335	.225	.235	.235	.250	X	X	
	-07	.395	.250	.280	.280	.250	X	X	
	-08	.455	.250	.280	.330	.330	.320	X	
	-10	.565	.250	.280	.330	.380	.420	.430	.425
	-12	.690	.250	.280	.330	.380	.500	.550	.550
	-14	.815	.250	.280	.330	.380	.500	.625	.625
	-16	.935	.250	.280	.330	.380	.500	.625	.750
TABLE 3		"X" INDICATES NOT AVAILABLE							
LENGTH DASH NO.	L	HELICOIL MIN FULL THREAD LENGTH							
		440	632	832	1032	428	524	624	
-04	.220	X	X	X	X	X	X	X	
-05	.285	X	X	X	X	X	X	X	
-06	.335	.112	X	X	X	X	X	X	
-07	.395	.168	.138	X	X	X	X	X	
-08	.455	.224	.207	.164	.190	X	X	X	
-10	.565	.224	.276	.246	.285	.250	X	X	
-12	.690	.224	.276	.328	.380	.375	.312	X	
-14	.815	.224	.276	.328	.380	.500	.469	.375	
-16	.935	.224	.276	.328	.380	.500	.469	.562	

PART CODE AND EXAMPLE:

2253-HE-428-LK-12-SPM

LUBRICANT: NO CODE = NO LUBRICANT
M= SOLID FILM LUBE

MATERIAL AND STANDARD FINISH: A = ALUMINUM ALLOY 2024-T4 OR T-351 PER AMS-QQ-A-225/6
CHEM-FILM PER MIL-DTL-5541, CL 1A.
SP = CRES 303 PER ASTM-A582. PASSIVATE PER ASTM-A967
SPC = CRES 303 PER ASTM-A582.
CADMIUM PLATE PER AMS-QQ-P-416. TYPE II CLASS 2.
SPS= CRES 303 PER ASTM-A582. SILVER PLATE PER AMS2410.
C = CARBON STEEL PER ASTM-A-108
CADMIUM PLATE PER AMS-QQ-P-416. TYPE II CLASS 2.

LENGTH DASH NUMBER(SEE TABLE 2 OR TABLE 3)

LOCKING TYPE: N = THREADED ONLY

LK = NYLON LOCK

L = CRIMP LOCK PER NASM25027

HEL = SELF-LOCKING HELICAL COIL PER NASM21209

THREAD SIZE: (SEE TABLE 1)

HEAD STYLE : H = STANDARD FLUSH

HE = FLUSH WITH POTTING SLOTS

SERIES 2253 POTTED-IN TYPE INSERT