

2235 SERIES

POTTED RIVET NUT

APPLICATION - "THESE FASTENERS ARE DESIGNED TO BE PULLED AND EPOXIED IN PLACE."

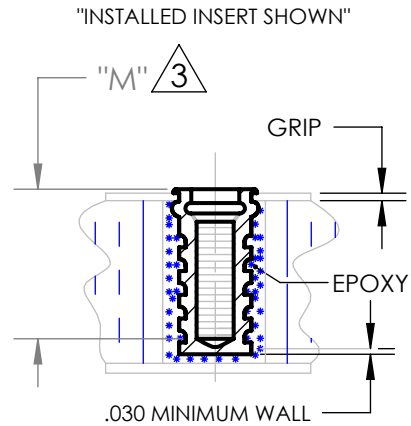
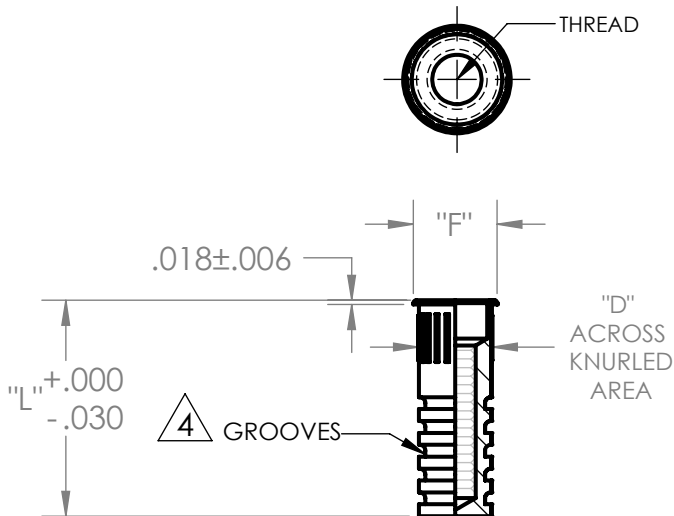


TABLE I

THREAD CODE	THREAD SIZE	"D" +.000/-.006	"F" +.030/-.000	M $\triangle 3$	INSTALLATION HOLE
1032	.190-32UNJF-3B	.296	.326	.330	.297 - .303
420	.250-20UNJC-3B	.390	.420	.390	.390 - .396
428	.250-28UNJF-3B	.390	.420	.390	.390 - .396
518	.312-18UNJC-3B	.530	.560	.370	.531 - .537
524	.312-24UNJF-3B	.530	.560	.370	.531 - .537
616	.375-16UNJC-3B	.530	.560	.370	.531 - .537
624	.375-24UNJF-3B	.530	.560	.370	.531 - .537

(EXAMPLE) **PART NUMBER CODE:**

SERIES 2235

THREAD CODE 428

INSERT LENGTH 1.125

FINISH (TO BE SPECIFIED) C
(C=CAD PLATE)

GRIP LENGTH (TO BE SPECIFIED) 060
(TOLERANCE ±.025")

NOTES:

1. MATERIAL IS 1008 CARBON STEEL PER ASTM-A-108
2. GRIP RANGE :
MINIMUM SKIN THICKNESS = .030
MAXIMUM SKIN THICKNESS = .300

$\triangle 3$ "M" DENOTES MINIMUM THREAD DEPTH, BASED ON .030 GRIP & .75 LONG INSERT

$\triangle 4$ NUMBER OF GROOVES VARY WITH LENGTH



WITTEN COMPANY, INC
www.wittenco.com

APPROVAL DATE: REV A 5/22/2023

CAGE CODE 0JHK5