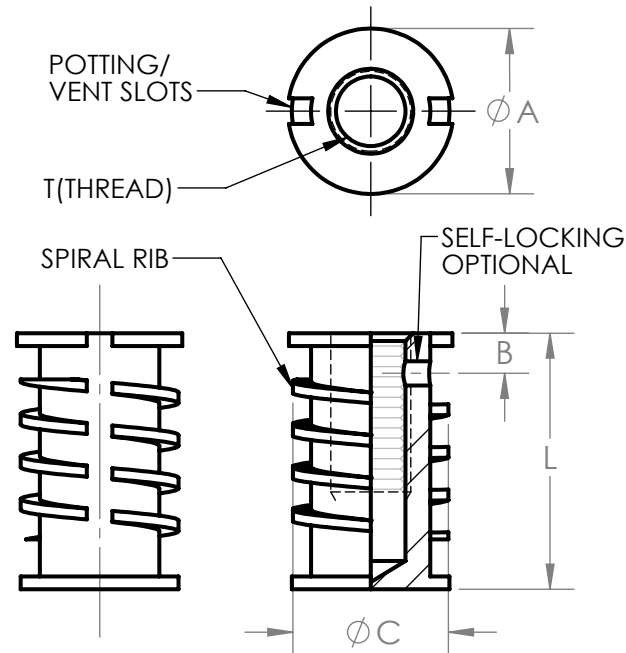


METRIC 150 SERIES - "SPIRAL RIB" THREADED INSERT, BLIND, REGULAR HEAD STYLE HEAVY DUTY, "HIGH PERFORMANCE"

CODE NO.	T THREAD	A DIA ±.010	B SELF-LK ±.06	C DIA ±.010	INSTL HOLE +.010/ -.000
M3.5	M3.5X.6	.490	.12	.460	.500
M4	M4X.7	.490	.12	.460	.500
M5	M5X.8	.520	.12	.490	.530
M6	M6X1	.583	.16	.553	.593
M8X1	M8X1	.646	.20	.616	.656
M8X1.25	M8X1.25	.646	.20	.616	.656
M10X1.25	M10X1.25	.708	.20	.678	.718
M10X1.5	M10X1.5	.708	.20	.678	.718
M12X1.5	M12X1.5	.833	.20	.803	.843
M12X1.75	M12X1.75	.833	.20	.803	.843
M14X1.5	M14X1.5	.895	.20	.862	.906
M14X2.0	M14X2.0	.895	.20	.862	.906
M16X1.5	M16X1.5	.958	.22	.924	.968
M16X2	M16X2	.958	.22	.924	.968



DASH NO.	L±.030 LENGTH	M3.5	M4	M5	M6	M8	M10	M12	M14	M16
		-5	.312	.162	.162	-	-	-	-	-
-6	.375	.225	.225	.175	-	-	-	-	-	-
-7	.437	.276	.287	.237	-	-	-	-	-	-
-8	.500	.276	.315	.300	.225	-	-	-	-	-
-10	.625	.276	.315	.375	.350	.350	.350	-	-	-
-12	.750	.276	.315	.393	.472	.475	.475	.400	.400	.350
-14	.875	.276	.315	.393	.472	.600	.600	.525	.525	.475
-16	1.000	.276	.315	.393	.472	.625	.725	.650	.650	.600
-18	1.125	.276	.315	.393	.472	.629	.750	.775	.775	.725
-20	1.250	.276	.315	.393	.472	.629	.786	.874	.900	.850
-22	1.375	.276	.315	.393	.472	.629	.786	.944	1.000	.975
-24	1.500	.276	.315	.393	.472	.629	.786	.944	1.000	1.150

150 - M5 - L - 12 - SS

MATERIAL & FINISH:

- A = ALUM ALLOY (CHEM FILM FINISH)
- C = CARBON STEEL (CAD PLATE FINISH)
- Z = CARBON STEEL (ZINC PLATE)
- SS = STAINLESS STEEL (PLAIN FINISH)
- SP = STAINLESS STEEL (PASSIVATE)

LENGTH DASH NO. (TABLE II)

ADD "LK" FOR SELF-LOCK (NYLON)
ADD "L" FOR SELF-LOCK (METALLIC CRIMP)

THREAD CODE NO. (TABLE I)

SERIES PREFIX

NOTES:

1. THREADS PER AS8879, CLASS 3B
2. PATENT NO. 4,941,785 AND 5,082,405
3. NO. OF SPIRAL RIBS VARIES WITH LENGTH
4. INSTALLATION TABS ARE AVAILABLE

WITTEN COMPANY
918-272-9567

APPROVAL DATE: REV:A 7/2/2021

GAGE CODE: 0JHK5