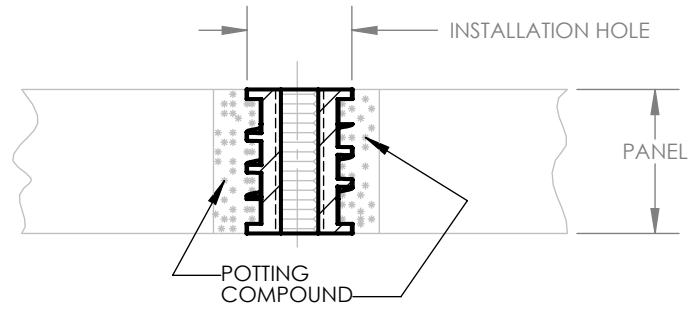
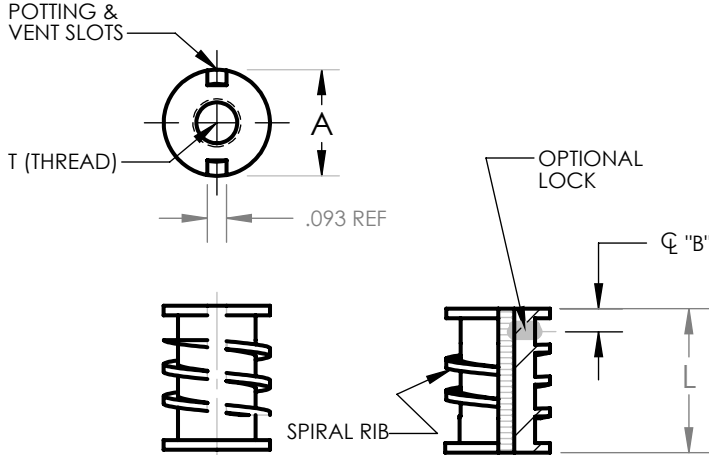


METRIC 2004 SERIES - "SPIRAL RIB" THRU - HOLE

MOLDED-IN OR POTTED-IN INSERT, FLUSH MOUNTED BOTH SIDES



CODE NO.	T THREAD	A DIA $\pm .010$	B SELF-LK $\pm .06$	INSTL HOLE SIZE $+ .005 / - .000$
M3.5	M3.5X.6	.490	.12	.500
M4	M4X.7	.490	.12	.500
M5	M5X.8	.520	.12	.530
M6	M6X1	.583	.16	.593
M8	M8X1.25	.646	.20	.656
M10X1.25	M10X1.25	.708	.20	.718
M10X1.5	M10X1.5	.708	.20	.718
M12X1.5	M12X1.5	.833	.20	.843
M12X1.75	M12X1.75	.833	.20	.843
M14X1.5	M14X1.5	.895	.20	.906
M14X2.0	M14X2.0	.895	.20	.906
M16X1.5	M16X1.5	.958	.22	.968
M16X2	M16X2	.958	.22	.968

DASH NO.	L $\pm .03$ LENGTH
-5	.312
-6	.375
-7	.437
-8	.500
-10	.625
-12	.750
-14	.875
-16	1.000
-18	1.125
-20	1.250
-22	1.375
-24	1.500

EXAMPLE PART NUMBERING SYSTEM:

2004 - M6 - L - 12 - SS

SERIES PREFIX

THREAD CODE (TABLE I)

ADD LK FOR SELF-LOCK (NYLON)
ADD L FOR SELF-LOCK (METALLIC CRIMP)

LENGTH DASH NUMBER (TABLE II)

MATERIAL:

A = ALUMINUM ALLOY (CHEM FILM FINISH)
C = CARBON STEEL (CAD PLATE FINISH)
Z = CARBON STEEL (ZINC PLATE)
SS = STAINLESS STEEL (PLAIN FINISH)
SP = STAINLESS STEEL (PASSIVATED)

NOTE:

1. ALL DIMENSIONS ARE IN INCHES EXCEPT THREAD SIZE.
2. FOR PARTS .625 & SHORTER THE OD HAS CIRCULAR RIBS IN LIEU OF SPIRAL RIBS.